



BILL MURPHY, P.E.

LYNN EWOLDT

TOM FICENEC

JARED SLAVIN

EFFECTIVE CONSTRUCTION STORMWATER CONTROLS

FEB. 2, 2023 | CITY OF OMAHA STORMWATER AND S.E.C. SEMINAR



HALE HOLDINGS

COMPANY HISTORY | 1938 - 2023

For more than eight decades, Hale Holdings, owner of ASP Enterprises, Bowman Construction Supply, Cascade Geosynthetics, and Quick Supply Company, has been a resilient organization focused on growth.

Our mission is to provide quality solutions to the construction industry with exemplary customer service and support. By continually learning about our customer needs, expanding our technical knowledge and diversifying our product mix, our technically skilled teams aim to be your local source for the very best site development solutions.



ABOUT US

45+

Years

12,000+

Customers

40+

Technical Sales Professionals
Providing Assistance & Support

5

CPESCs on Staff

1

Civil Engineer, P.E.
on Staff

25+

Truck Drivers to Deliver
Materials to Jobsites



LOCATIONS WE SERVE



9 Offices

- **ASP** - St. Louis, Kansas City, Omaha & Wichita
- **Quick Supply** - Des Moines
- **Bowman** - Denver, Loveland & Colorado Springs
- **Cascade** - Portland

SITE SOLUTIONS

- Erosion & Sediment Control
- Geosynthetic Solutions
- Stormwater Management
- Revegetation Solutions
- Hardscapes



PRODUCT DISPLAYS & STOCKED WAREHOUSES



VAST INVENTORY READY TO DELIVER



Your Trusted Site Solutions Specialists

Newsletter (monthly)

Technical Talks webinars (monthly)

Lunch-n-Learns (ongoing, call us to schedule yours)

Conference exhibit booths and presentations (all year long, invite us to your event)

Clean & Green: (Tuesday, March 7, 8am-3:30pm @ Tiburon Golf Club, Omaha)

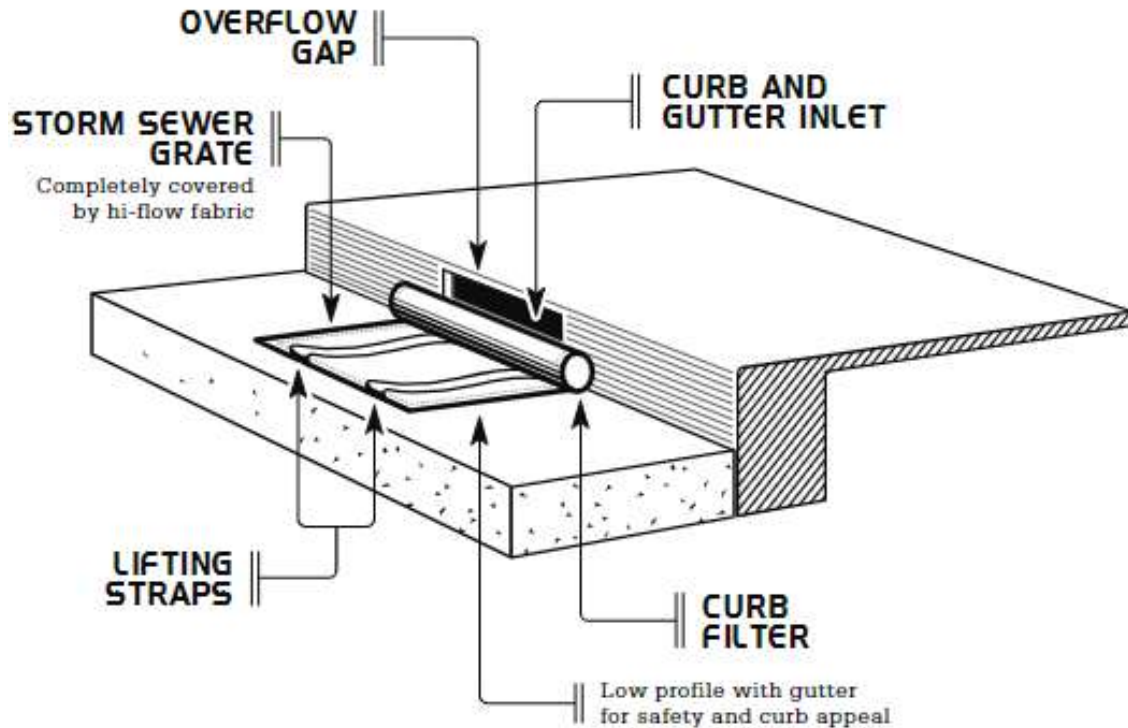


Scan the
QR Code
to Register!



DANDY PRODUCTS

DANDY CURB BAG™



- 2.1 The Dandy Curb Bag® curb and gutter inlet protection unit shall be a **sewn in the U.S.A.** geotextile fabric unit enclosing a porous structure in the form of a cylindrical tube placed in front of and extending beyond the inlet opening on both sides and have a geotextile fabric envelope fitted to the individual grate(s) on the street side of the sewn unit for grate(s) to be inserted and to completely enclose the grate(s).
- 2.2 The Dandy Curb Bag® shall have lifting devices to allow manual inspection of the storm water system.
- 2.3 The Dandy Curb Bag® unit shall utilize an orange monofilament fabric that is manufactured in the U.S.A. with the following characteristics:

SILT FENCE

- Willacoochie 1215DT



GATOR GUARD



[Home](#)

[Products](#)

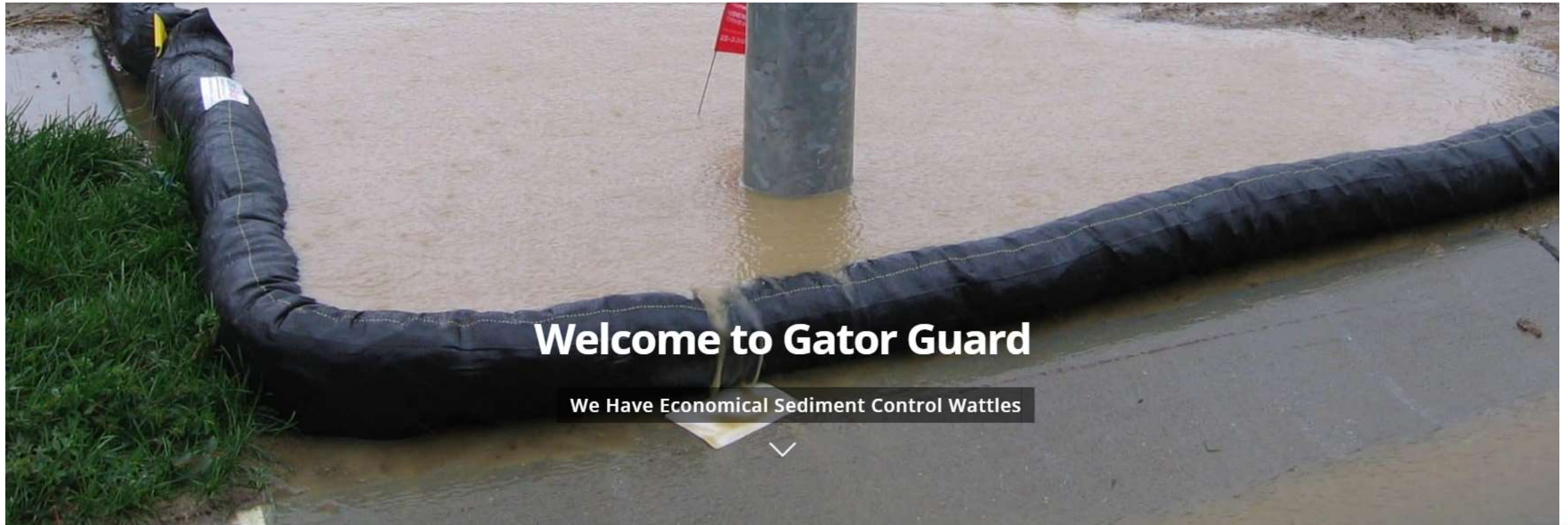
[Dealers and Installers](#)

[Downloads](#)

[Contact](#)

Call (877) 428-6763

[Request A Sample](#)



Welcome to Gator Guard

We Have Economical Sediment Control Wattles





Sediment Control Wattles

Foam filled monofilament geotextile wattles are durable, extremely effective, lightweight, easy to install, moveable, and reusable. Ideal for construction site perimeter control.



Weighted Wattles

Weighted wattles and gutter wattles for use on asphalt and concrete are filled with sand, triple wrapped in plastic and monofilament geotextile for durability. A soft bottom conforms to the street.



Foam Logs

Use our foam logs as driveable berms on vehicle size containments or large drill pad containments. They are typically wrapped in the edge of the liner and heat sealed in.

[LEARN MORE](#)

BIG RED

- Inlet Protection



BIG RED

- Inlet Protection



BLOCKS

OM

Inlet Filter Specifications:

Item #	Dimensions	Pieces per Carton	Pieces Per Pallet
IF1527X30C	1.5" x 27" x 30"	10 pads	120 pads
IF1527X21FTB	1.5" x 27" x 21'	1 roll	12 rolls
IF1527X75FTB	1.5" x 27" x 75'	N/A	3 rolls



MKB STORMWATER INNOVATIONS

BLACKHAWK™

Advanced Inlet Filter Mat

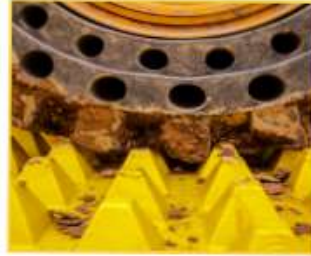


Sediment control device designed to prevent street flooding while being easy to install and service.



FOD

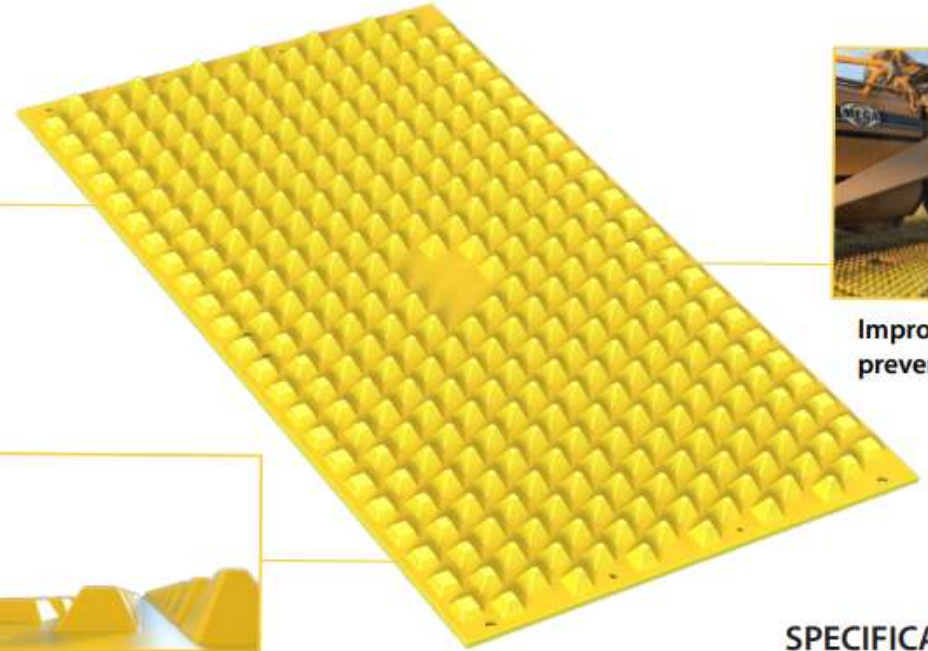
S



Pyramids effectively clean tires through compression and stretching without damage to the tire



Built-in ramp for gradual transition onto and off of mats



Improves compliance, prevents road hazards

SPECIFICATIONS

Mat Size: 12'(w) x 7'(l) x 3 3/4"(h)

Pyramid Size: 2 7/8"(h)

Mat Weight: 420 lbs.

Lifespan: 10+ years

FOD S



ROUND HEAD STAKE

- 1) Predrill the holes for the stakes using a 3/4" drill bit.
- 2) Use a sledge hammer to drive the stakes into the substrate.



SCREW ANCHOR

- 1) Predrill the holes using a 3/4" concrete drill bit. Remove debris.
- 2) Using an impact driver with a 1-1/8" socket, drive the anchor into the concrete.



CONCRETE FORM STAKE

- 1) Predrill the holes for the stakes using a 3/4" drill bit.
- 2) Use a sledge hammer to drive the stake into the substrate.
- 3) Add washer and pin as shown, then hammer stake until flush.

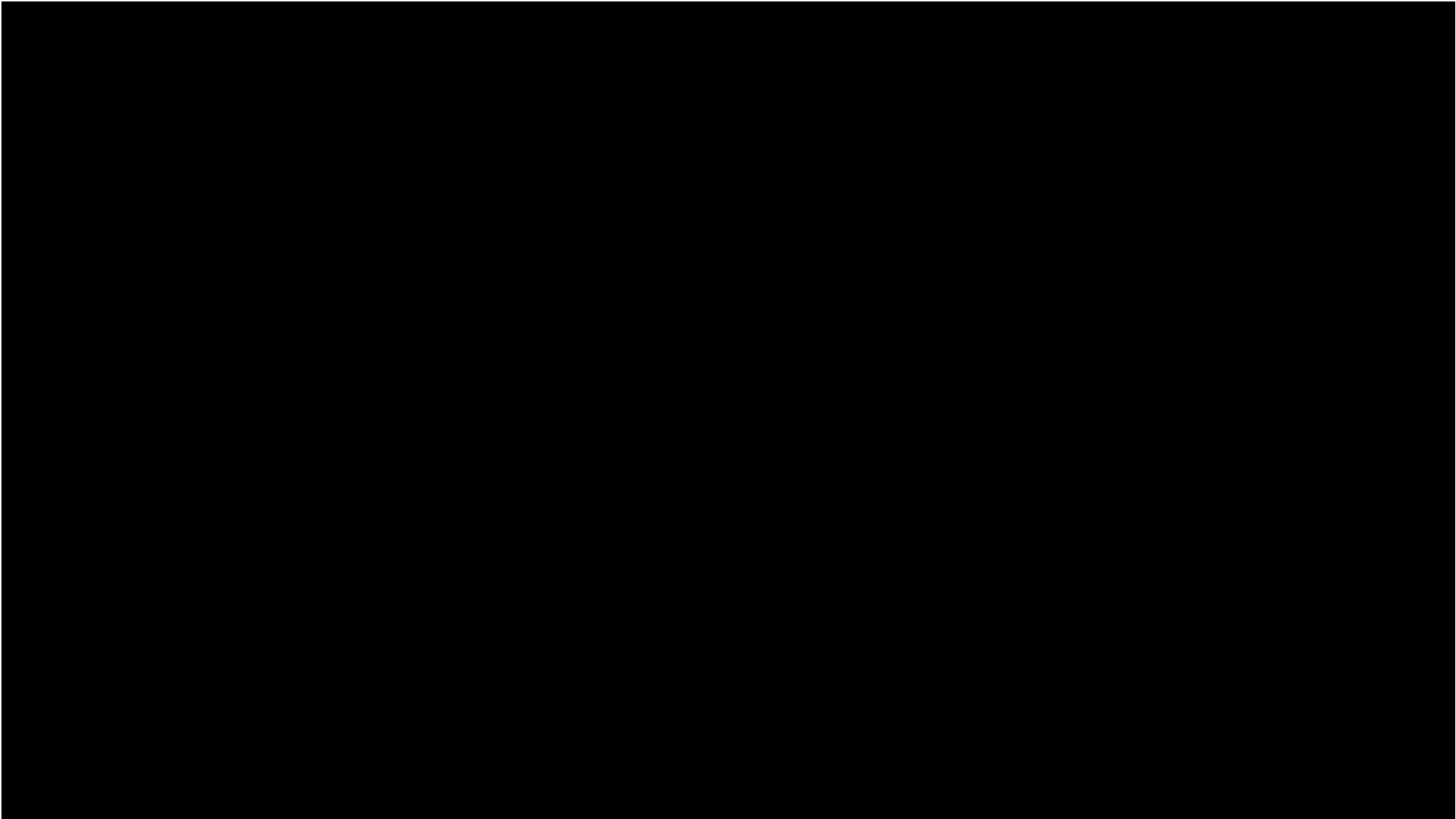


EXPANDABLE SLEEVE ANCHOR

- 1) Predrill the holes using a 3/4" concrete drill bit. Remove debris.
- 2) Use a sledge hammer to drive the anchors into the substrate.
- 3) Using an impact driver with a 15/16" socket, expand the anchor.



FOD
S



FODS



Michael N. · 2nd
Regional Sales Manager at FODS
12h · Edited · 🌐

[+ Connect](#)

You're looking at two construction entrances for sandy soil conditions. These FODS mats will replace over 864 cubic feet of crushed stone and will continue to do so for 10-12 years. FODS can be delivered by trailer instead of dispatching two dump trucks! No need to refresh the stone! Each mat collects almost 12 cf of sediment before maintenance. You can brush, flip, hose, blow, or shovel them clean! Try doing that with rock! www.getfods.com





GPM

GROUND PROTECTION MAT

REDUCE WASTE

UNLIKE PLYWOOD, REUSABLE AND DURABLE MATS WILL NOT WARP, ABSORB WATER, SPLINTER, OR ROT.

SITE ACCESS

CREATE TEMPORARY ROADWAYS FOR VEHICLE ACCESS OVER SOFT & UNSTABLE SUBSTRATES.

PORTABLE

LIGHTWEIGHT MATS CAN EASILY BE INSTALLED BY HAND & TRANSPORTED USING A STANDARD PICKUP TRUCK.

PROTECTS GROUND

PREVENT RUTTING ON EXISTING LANDSCAPING. PROTECT CONCRETE AND OTHER FINISHED SURFACES.

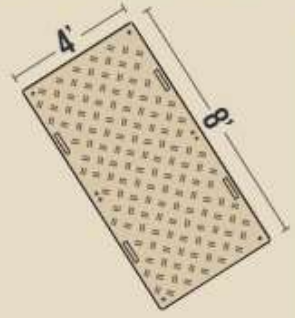
DOUBLE-SIDED

VERSATILE TRACTION PROFILE



MODULAR DESIGN

CONNECT MATS INTO ANY LAYOUT



MULTI-TERRAIN

CAN BE USED OVER:



HARDWARE

Two variations of locking plates connect two or four mats together at common corners or sides.

1-5/16" SOCKET SIZE



APPLICATIONS

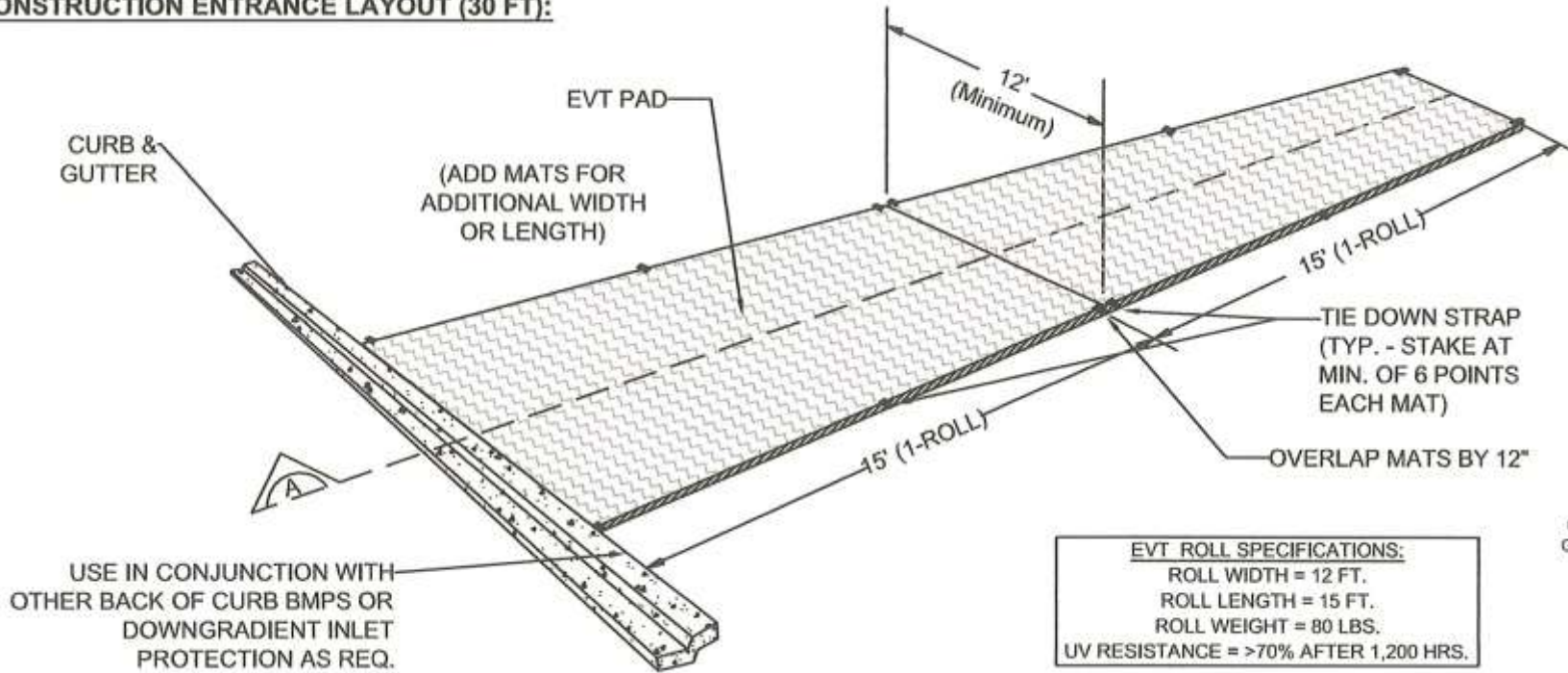
- SIDEWALK PROTECTION
- TEMPORARY ROADWAY
- EQUIPMENT ACCESS
- LAWN PROTECTION
- STAGING AREA
- UTILITY WORK ACCESS
- EVENT FLOORING

ECO VEHICLE TRACKING PAD (EVT)

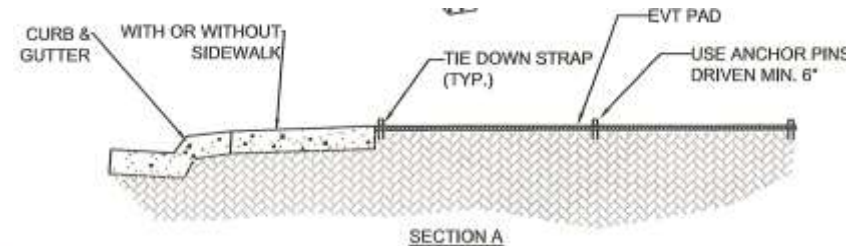
- Rubber Mud Mats



3) CONSTRUCTION ENTRANCE LAYOUT (30 FT):



EVT ROLL SPECIFICATIONS:
 ROLL WIDTH = 12 FT.
 ROLL LENGTH = 15 FT.
 ROLL WEIGHT = 80 LBS.
 UV RESISTANCE = >70% AFTER 1,200 HRS.



OUTPAK

K • Concrete Washout



Corrugated Washout

Outpak Corrugated Washout is a universal, "portable" washout. Good for mixer truck and wheel barrow washout containment. Easy to dispose of after job completion.

Sizes:

4' x 4' x 14"	.68 cu. yds.	10 washouts
6' x 6' x 12"	1.33 cu. yds.	15 washouts



PVC Washout

PVC Washouts are designed for a larger volume of containment for pump trucks and mixer trucks. The High UV resistance of the PVC Washout allows for longer job life and higher tolerance to extreme weather conditions.

Sizes:

6' x 8' PVC Washout	2 cu. yds.	30 washouts
8' x 10' PVC Washout	3 cu. yds.	45 washouts



GEOCURV

E

- Inlet Protectors



Lakewood Village





Challenge

The major challenge was to provide park users with shoreline access, protect the shoreline against erosive wave action and geese activity, permitting maintenance right up to the water's edge all while allowing vegetative growth. Riprap, permanent turf reinforcement mats (TRM's) and Flexamat were looked at as options.

Solutions

The City of Omaha Parks & Recreation department has a very limited budget for maintenance work and wanted something permanent to protect this small lake's south eastern shoreline and a product that they could install themselves. Rip rap could have been used but is not park-user friendly. TRM's are permanent but would not be able to handle foot traffic. Flexamat with an excelsior backing met all the criteria and comes in rolls allowing for efficient installation.

Results

All of the challenges have been met. With the onsite assistance of ASP Enterprise's Omaha team the 12 rolls of 8' x 41' Flexamat were delivered and installed in less than 2 days. There will be an on-going dispute between the maintenance people that want maintainable vegetation right up to the water's edge and those that believe an un-vegetated delineation along the lake's edge looks the best. Asked what he thought, John Williams said "The post installation appearance is very clean looking, much better than rip-rap. I plan to use it more and can hopefully introduce it on some of our golf course ponds."



1 Sycamore tree erosion.



2 Shoreline before installation.



3 Setting full rolls.



Omaha Benson Park Lake

Manufacturers included in solutions and product:
Product:
Flexamat
Manufacturer:
Motz Enterprises

Omaha Benson Park Lake



4 Rolling out mats.



5 First day installation results.



6 Bald Cypress Trees protected.



7 Sycamore tree protected.





Clear Creek





Unrollin
g
video



Flexamat



“TECHNICAL TALKS” WEBINARS

PAST WEBINARS: YOUTUBE CHANNEL

ASP, Quick Supply, Bowman & Cascade

**WED., APRIL 5 = STORMWATER QUALITY –
STRATAVAULT SOIL CELLS FOR URBAN TREES +
BIOSOL FOR VEGETATED SOLUTIONS**

CONTINUES MONTHLY: JOIN OUR MAILING LIST



CLEAN & GREEN IS BACK IN 2023!

SIX DATES & LOCATIONS

Omaha, NE - 3/7

Des Moines, IA - 3/8

Kansas City, MO - 3/9

St. Louis, MO - 3/10

Portland, OR - 3/14

Denver, CO - 3/16



Scan the
QR Code
to Register!



CONTACT US

“Your Trusted Site Solution Specialists”

Questions about a product or project?
Visit our website or call us.

ASP (636) 343-4357 | aspent.com

Quick Supply (515) 289-1271 | quicksupplyco.com

Bowman (303) 696-8960 | bowmanconstructionsupply.com

Cascade (971) 339-1020 | cascadegeos.com

